

The IRENA support to Renewable Energy Planning in the ECOWAS Region

International Renewable Energy Agency (IRENA) Innovation and Technology Centre

Development of the ECOWAS RE and EF National Action Plans and SE4ALL
Abidjan, 17-19 March 2014



Planning for the Global Energy Transition

Starting point: Understanding the future energy needs and options based on

- Sound statistics and data
- Transparent methodology
- Ownership of the planning skill

→ Definition of realistic goals/targets

Policy support: Understanding the barriers, identify areas of policy interventions, learning from best practices

- Knowledge gap, enabling investment environment, institutional capacity etc

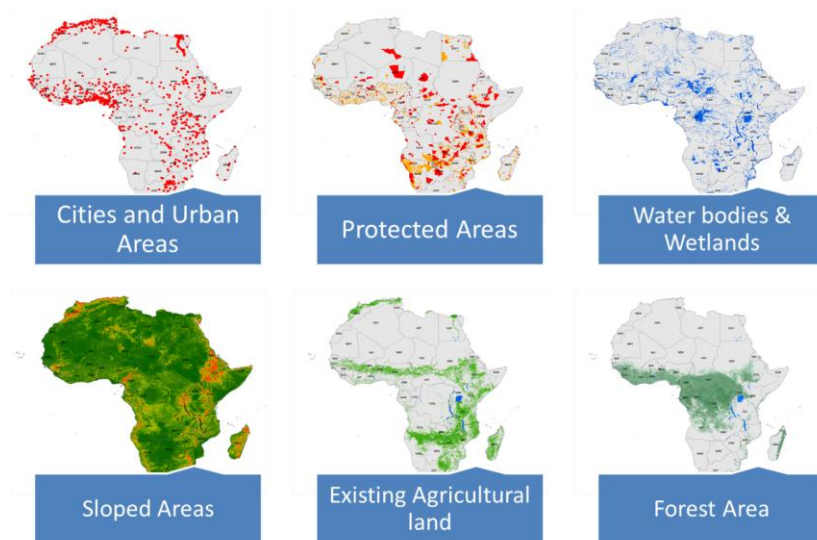
Statistics and data

Understanding the future energy needs and options

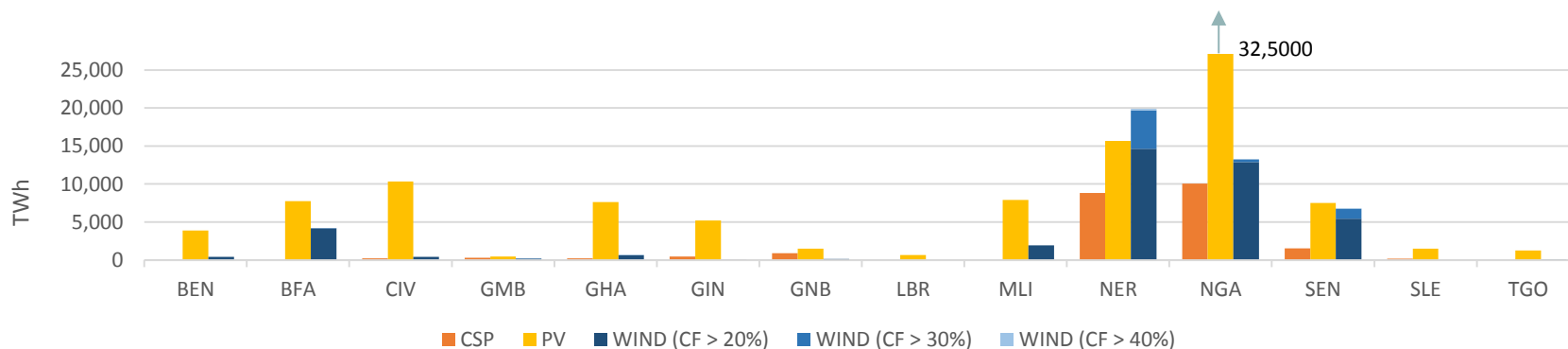
Bioenergy and distributed RE statistics

Resource mapping: Global Atlas
Africa Power generation potential of solar and wind (GIS analysis)

RE technology cost database
RE technology briefs



Theoretical generation potential per year



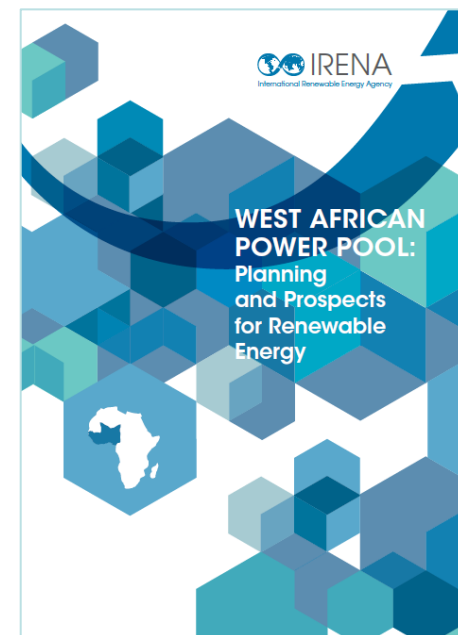
SPLAT-W model (long-term least-cost modelling tool for the power sectors in ECOWAS countries)

- Power sector models with RE focus
- RE resource potential and costs assessment incorporated
- Made available with tutorial

REmap tool (Accounting framework to evaluate the national energy trajectory)

- IRENA's major contribution to SE4ALL as the 'renewable hub'
- Assessment of energy sector development trajectory according to gov plans
- Identification of additional RE technology potentials and associated costs

Integration of VRE (primarily solar and wind)



Country-owned institutionalized-skill ensures plans to be (1) endorsed by government and (2) updated

IRENA's support to institutional capacity building through:

- A special program set up based on collective requests from a region
- IRENA advisory services as post RRA follow up
- REMAP project participation
- Collaboration with partner initiatives (e.g., IAEA Technical Cooperation, SE4ALL Action Agenda implementation)



Policy and capacity building Support in the region



Renewables Readiness Assessment

- Identification of barriers based on national stakeholders consultation
- Development of concrete action plans (short- to mid-term)
- Identification of resource experts from Renewable Energy practitioners network to assist in the consultation

Project navigator

- A set of tools to support development of bankable projects for selected RE technologies
- Regional specificities are being incorporated

Promoting a Sustainable Market for PV systems in the ECOWAS Region (ProSPER initiative)

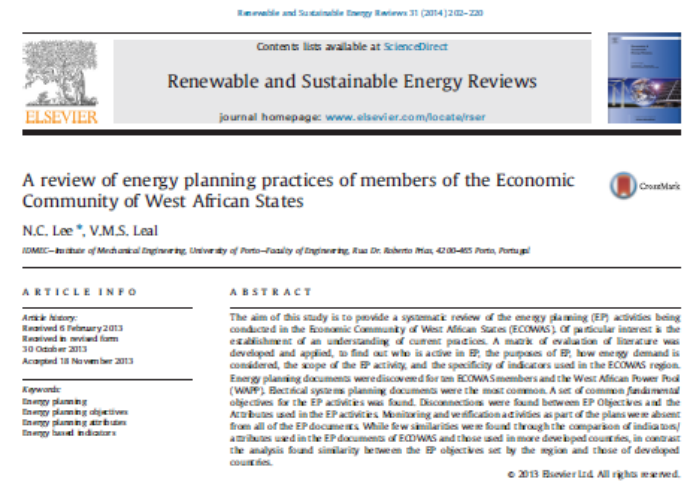
- Capacity building of policy makers, financial institutions and entrepreneurs

Advisory services

- RE technologies standards and quality assurance scheme
- Capacity needs assessment

Development of power sector baseline trajectory for ECOWAS countries

- IRENA's desk-top study, developed using SPLAT-W
- Normative scenario, illustrating the implications of EREP on each country
- Provide useful benchmark
- The SPLAT-W is available with tutorials and technical support



→ More discussion on Wednesday “Capacity building on baseline scenarios for the NREAPS”

Thank you for your attention

Asami Miketa

amiketa@irena.org

www.irena.org

